

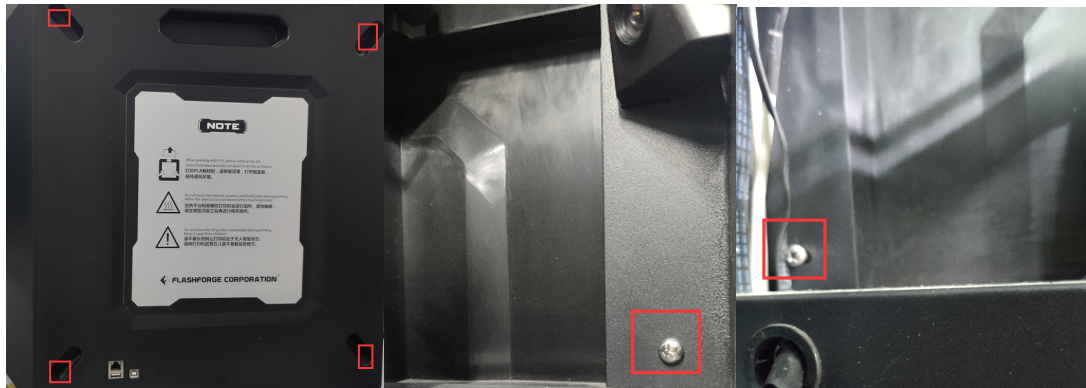
Installation Guide of Guider2S Flexible Platform

Component: magnetic sticker, the flexible platform, new glass framework

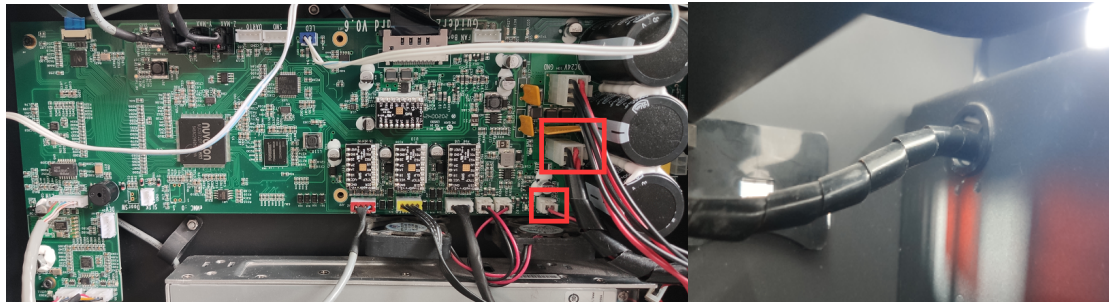
Tools: M2.5 Allen wrench and Phillips screwdriver

1. Remove the four screws on the external right side cover of Guider2s by using M2.5 Allen wrench and remove the two Phillips screws on the internal right side cover of Guider2s by using phillips screwdriver. Then remove the right side cover.

Please see the red highlight marks.



2. Plug out the heating cable and heating temperature sensor cable out from the mainboard (Picture a) and take the cables out of the inner hole (Picture b).

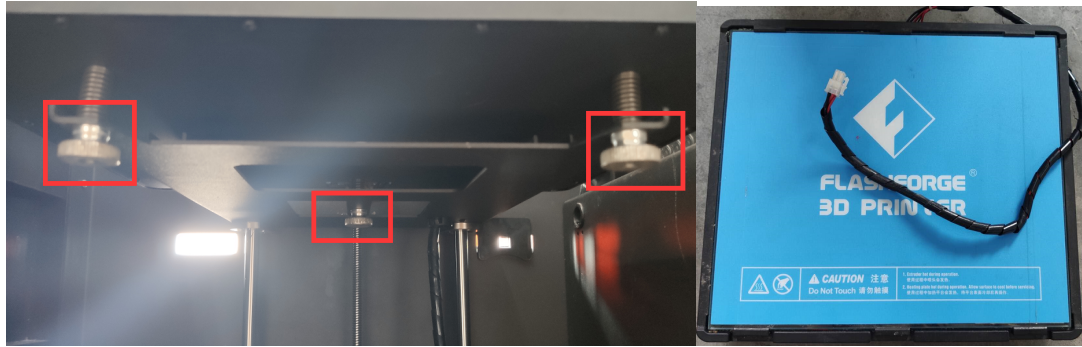


(a)

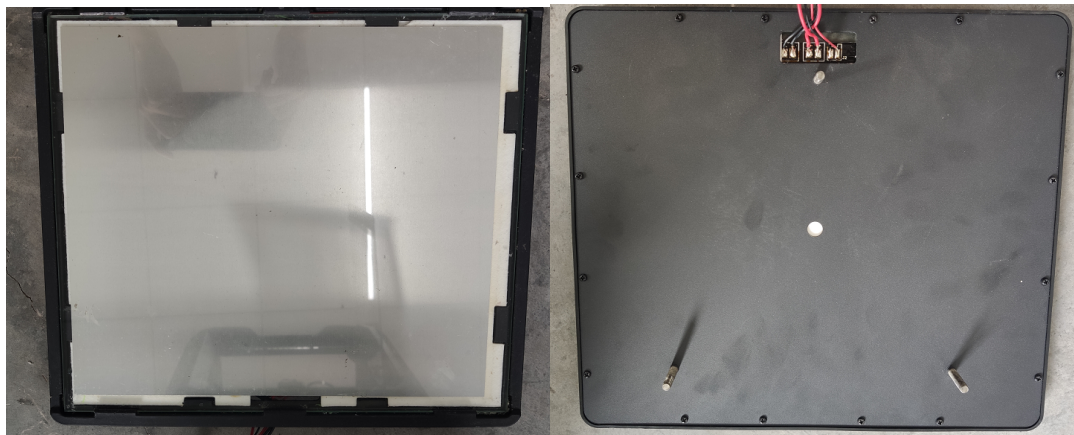


(b)

3. Twist the three leveling knobs under the platform out clockwise ; then remove the whole platform assembly. (There are three springs when twist out knobs and save it) .



4. Remove the platform sticker first (Picture c) and turn the platform assembly to 180 degree. Remove the sixteen screws on the platform assembly (Picture d) , take out the heating plate and take the glass out (Picture f) . (Note: If there are obvious glue marks on the platform after the platform sticker is torn off, you need to clean it up first.)



(c)

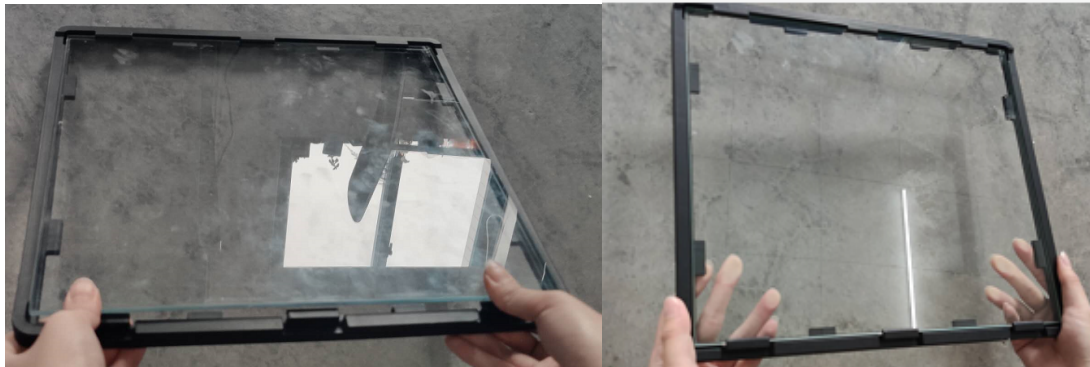
(d)



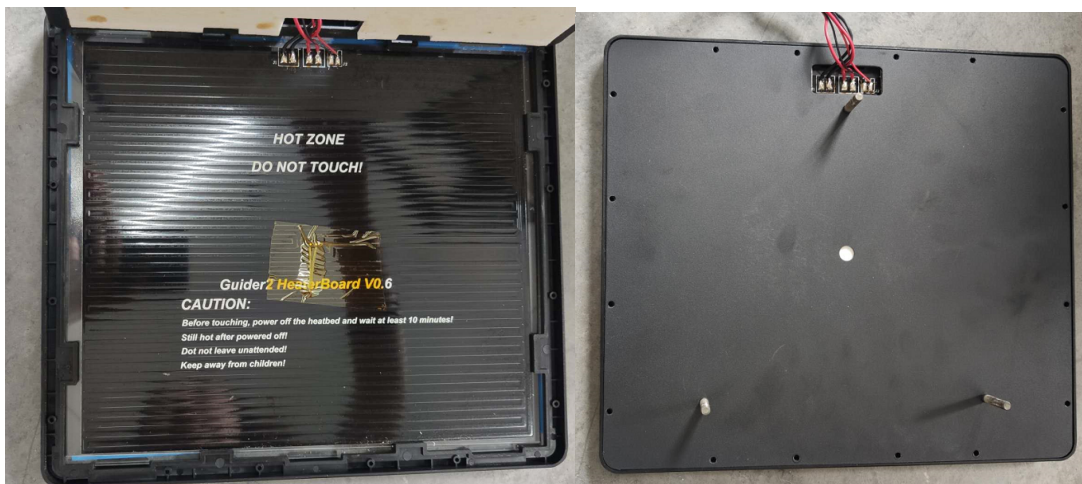
(e)

(f)

5. Using the new framework to install platform.



6. Install the heating plate and thermal baffle in turn and fix the six screws.





7.Put a magnetic sticker on the glass platform, and then put the flexible platform with platform stickers on it.



8.Put the installed whole platform heating assembly back into the machine, put on 3 springs, tighten the leveling knobs counterclockwise. The heating plate cable and the heating temperature sensor cable are inserted back into the mainboard, the right side cover plate is turned back, and the installation is completed.

